



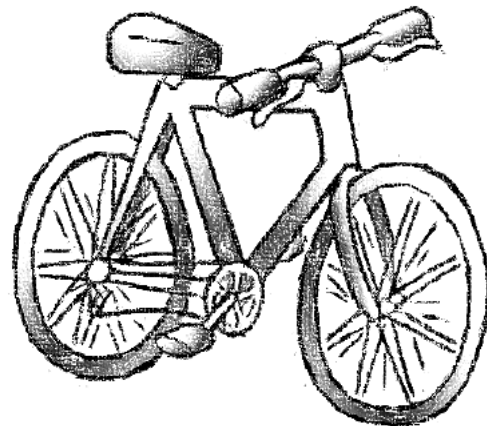
The Queen Elizabeth
Academy

"We Can and We Will"

Cycling to School

We allow students the privilege of commuting to and from school on their bikes, this privilege is dependent on the following rules being adhered to:

1. When arriving at school, students must dismount at the first gate in from the drive and walk their bike into school putting it in the bike shed straight away
2. Once their bike has been stowed in the shed it must remain there untouched until after 3.05pm
3. At 3.15pm all students cycling home will be released, this delay is for Health and Safety reasons as it allows for the busy traffic to dissipate
4. On Safety grounds we would also advise students cycling to wear a helmet and especially in the winter months, an item of high visibility clothing
5. When cycling to and from school students should conduct themselves in a sensible manner being courteous to all other road users



FAILURE TO FOLLOW THESE RULES MEANS PARENTS WILL BE CONTACTED AND THE PRIVILEGE OF CYCLING TO SCHOOL REMOVED