

# SKILLS FOR EMPLOYMENT NUNEATON & BEDWORTH BOROUGH FACT SHEET 2019



This factsheet provides an easy-to-access overview for pupils and teachers of the current and future employment and skills situation using the latest data.

## SKILLS MOST DEMANDED IN JOB VACANCIES

Customer Service  
Teaching  
Sales  
Teamwork

Child Care  
Budgeting  
Project Management  
Secretarial Skills



## LARGEST EMPLOYERS

George Eliot Hospital NHS Trust  
Regent Office Care Ltd  
Brose Ltd  
Rs Components Ltd  
Tesco Stores Ltd

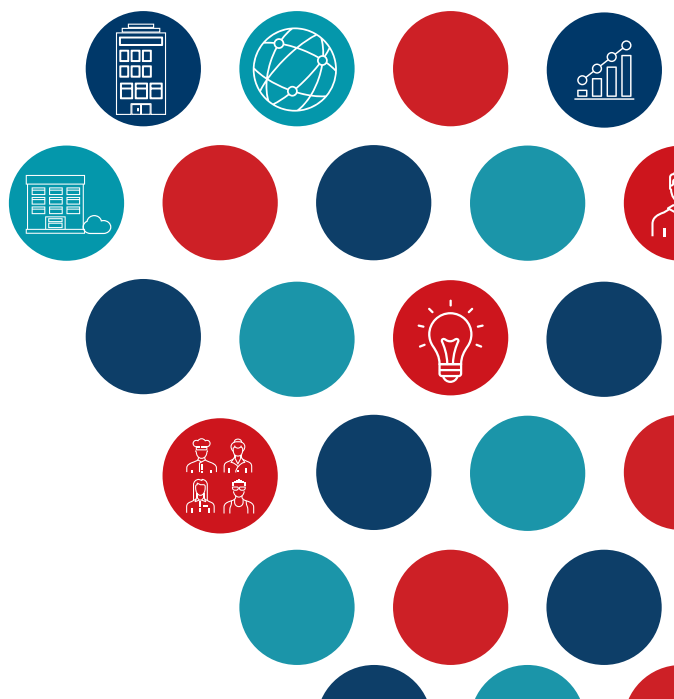
Global Experience Specialists (GES)  
North Warwickshire & South  
Holland And Barrett Retail Ltd  
People In Action  
Extra Personnel Ltd



## EMPLOYERS ADVERTISING THE MOST JOB VACANCIES

National Health Service  
Barrett Steel  
Britannia Hotels Limited  
Superprof  
Marriott International

Mira Limited  
South Leicestershire College  
Agco Limited  
The Penderels Trust Limited  
Everyone Active Cic



# KEY FOR INFORMATION BELOW

Those in red are most at risk of automation in future leading to a reduction in demand for employees, as machinery/control systems replace the need for such physical human efforts. Those in blue may also be affected, but to a lesser extent. Those in black are considered to be extremely low risk and unlikely to be effected by automation.

● = High risk of automation    ● = Potential risk of automation    ● = Low risk of Automation

## INDUSTRIES CURRENTLY EMPLOYING THE MOST PEOPLE

- |                           |                                 |
|---------------------------|---------------------------------|
| Retail Trade              | Wholesale Trade                 |
| Health                    | Construction                    |
| Education                 | Food & Beverage Services        |
| Business Support Services | Public Administration & Defence |
| Residential & Social      | Warehousing & Postal            |

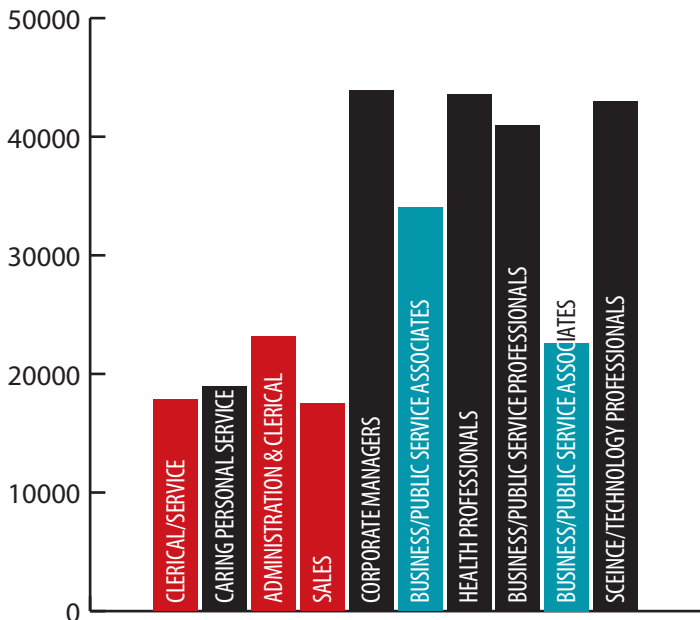
This factsheet is produced by Warwickshire County Council's Economy & Skills team as part of the Council's £3 million Skills for Employment programme to improve the employability skills of young people and help businesses recruit to address skills shortages.

## INDUSTRIES FORECAST TO GROW MOST IN NEXT 5 YEARS

- |                          |                                 |
|--------------------------|---------------------------------|
| Real Estate              | Legal & Accounting              |
| Electronics              | Business Support Services       |
| Food & Beverage Services | Motor Vehicles Trade            |
| Arts                     | Land Transport                  |
| Warehousing & Postal     | Public Administration & Defence |

Enquiries about this factsheet should be sent to: [skillsforemployment@warwickshire.gov.uk](mailto:skillsforemployment@warwickshire.gov.uk)

## MOST POPULAR OCCUPATIONS BY ANNUAL WAGE (£)



## OCCUPATIONS FORECASTED TO HAVE THE LARGEST EMPLOYMENT GROWTH BY ANNUAL WAGE (£)

