



22/23

**The Queen Elizabeth
Academy**



Weekly—
Newsletter

Issue No — 54



The Queen Elizabeth
Academy

Updates to academy procedures at TQEA



Dear Parents and Carers,

The government is bringing in legislative changes regarding expectations for students around attendance and punctuality from September, which will be of concern to all students at TQEA. In order to limit the impacts on our students and their families we are altering our morning entry procedures to allow our community to prepare and adapt to the new government expectations.

From September families of students who are late to school regularly in the morning can face legal action and fines in the same way that persistent absent students do currently. We will be legally obligated to refer families to the local authority where lates are frequent and persistent.

Our learning time begins at 8.45 am with **all students are required to be on site by 8.40 am** and in learning at 8.45 am. If students are arriving after 8.40 they will not be learning at 8.45 and will be causing disruption to the learning of other students as they walk corridors and enter classrooms after the bell.

Therefore, after February half term we will be closing our internal entry gates to the playground at 8.40 am in the morning, which is the time students are required to be on the academy site. After this time all students must enter the academy through the main reception entrance and will be met by senior leaders and issued with a late sanction, where appropriate, as per the current behaviour policy. This will also allow us to fully ensure that our site is secure and students are fully supported and safeguarded in advance of the start of the day. Furthermore, it will ensure minimum disruption to learning for other students as everyone will be in classrooms on time and in learning.

Students have been briefed on these changes all week and are aware of the change of approach after half-term.

Once on the academy site, Years 7, 8 and 9 will start each morning with their Morning Meeting. This supports our TQEA culture by ensuring that all students are fully prepared for a fantastic day of learning. Through our Morning Meetings we prioritise learning and ensure that this is at the heart of everything that we do. Students will also participate in a line up at break and lunchtime to ensure they return to learning from their social time in a purposeful manner, ensuring that corridors and stairs are not over-crowded. They will be collected and escorted by their teacher

Year 10 and Year 11 will start their learning prep sessions at 8:45 am with their tutors and will enter the academy after social times, as they do currently. As with all other students they are required to be on-site before 8:40 am.

In order to ensure learning time is prioritised, it is expected that all students wear their TQEA uniform with pride and come to school fully equipped. Perfect uniform demonstrates a readiness to learn and prepares young people for the uniforms, work expectations and potential dress codes that young people will have to adhere to in work in later life. The full expectations of our uniform can be found on our website - [Uniform & Equipment - The Queen Elizabeth Academy \(atrust.org.uk\)](http://atrust.org.uk). If students are not in the correct academy uniform, and do not have a note from home, a sanction will be issued as per our current behaviour policy.

TQEA students are expected to bring all of the necessary equipment to school every day in order to access their learning successfully. Students should have a pencil case with 2 or 3 pens, a green pen, a highlighter, a pencil and ruler. Each morning, there is the opportunity to buy any equipment and some uniform items (ties, black socks) required from the Equipment Shop which is in the canteen from 8.20am. This can offer an opportunity to students to prevent them from receiving a sanction for not having the correct uniform and equipment.

Students are aware of these expectations and the role of the morning meeting/line ups. They have been briefed all week and have practised the routines in preparation for the changes.

We thank you for your continued support in ensuring that every student at The Queen Elizabeth Academy achieves their full potential and has a positive day of learning each and every day. We know that these measures will promote learning, will support the organisation of students for learning and progress and will ensure that safety is our priority.

Please contact us at the academy if you have any questions.

B. Gibson

A.C. Morris

Mrs Beth Gibson (Assistant Principal, Attendance and Disadvantage)

Mrs Alison Morris (Assistant Principal, Behaviour and Culture)

Uniform and Equipment Expectations



The Queen Elizabeth
Academy
"We Can and We Will"

TQEA piercings guidelines

One discreet stud earring in each ear permitted.



No other piercings are permitted in school.



All jewellery must be removed for PE lessons.

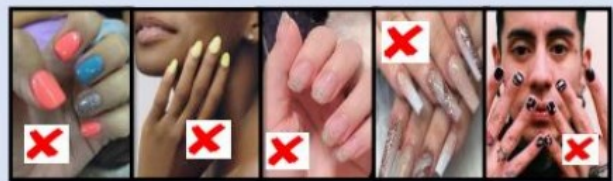


The Queen Elizabeth
Academy
"We Can and We Will"

TQEA nails and make up guidelines

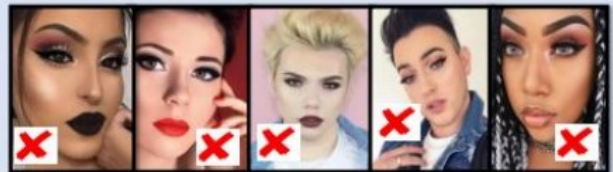
No nail varnish or excessive and impractical length nails.

No acrylic nails are permitted.



A discrete, small amount of natural make up in years 9-11 only.

No false eye lashes.



The Queen Elizabeth
Academy
"We Can and We Will"

TQEA hair guidelines

Hair should be one natural hair colour with no patterns or shapes cut into it. No shaved heads or No 1 either all over or part.

We find that hair colours / cuts that do not conform to our requirements distract from learning.



No headwear, hats or caps are permitted in school.

Uniform and Equipment Expectations

Examples of permitted and not permitted items:



No ankles on show, leggings, skin tight material or jeans.



Pleated skirts only. No skin-tight material, body con or short skirts.

Uniform and Equipment Expectations



With regards to shoes, please remember that all shoes must now be completely black leather, or leather like, with no mesh, material or canvas parts. **No trainers of any kind are allowed.**



Principal Awards



Showing excellent endeavour by always completing her XP boost and target work on SPARX



Great engagement in math and working hard.



Consistently working hard in Spanish.



Consistently high standards in the Engineering Workshop.



Positive attitude to learning and a real effort to improve for his speaking exam .



Head of Year

Special Recognition

Congratulations Year 10 or working hard to improve our positive achievement points! Here are the top students from their tutor groups.

Melody Storor 10JXP 16 points

Ben Richards 10LXC 15 points

Liam Hembridge 10NMP 9 points

Mason Carroll 10RM 20 points

Maisie Watson 10RZC 28 points



Celebration of Achievement

Top 3 Tutor Group

06/02-12/02

7LXE 488 points
10RZC 442 points
7DK 413 points

Top 3 Tutor Group

Year to Date

7LD 8499 points
10RZC 8176 points
7DK 7732 points

Top Year 7 Students

06/02-12/02

Ava Peyton 7LXE 30 points
Lily Haddon 7LXE 28 points
Felicity Ariyanto 7DK 26 points
Connie Barsby 7LXE 24 points
Lewis Dyson 7LXE 24 points
Keira Hopkins 7DK 24 points
Rosie Matthews 7LXE 24 points
Henacey Ralph 7LXE 24 points

Top Year 8 Students

06/02-12/02

Keira Russell 15 points
Harlow Cooper 13 points
Bethany Benton 13 points
Lohan Brown 12 points
Andreea Pstelnicu 12 points

Top Year 9 Students

06/02-12/02

Alfie Burbury 9MXH 21 points
Brooke Jones 9DJD 17 points
Grace Francis 9DJD 16 points
Alyssa Goodwin 9MXH 16 points
Lorelei Kessler 9DJD 16 points
Ava Mullings 9MXH 16 points
Scarlett Neal 9SK 16 points
Darsy Tressler 9SJ 16 points

Top Year 10 Students

06/02-12/02

Maisie Watson 10RZC 28 points
Joseph Gibson 10RZC 25 points
Maisie marple 10RZC 23 points
Coral Chetwynd 10RZC 22 points
Maria Sammons 10RZC 22 points

Top Year 11 Students

06/02-12/02

Ashton Evans 11KJW 16 points
Adam Ractcliffe 11ECT 16 points
Emily Horton 11ECT 12 points
Harry Wilson 11JYS 12 points
Saffron Wilson 11MRB 12 points



KEEP UP THE GREAT WORK!!

Curriculum in Action #21

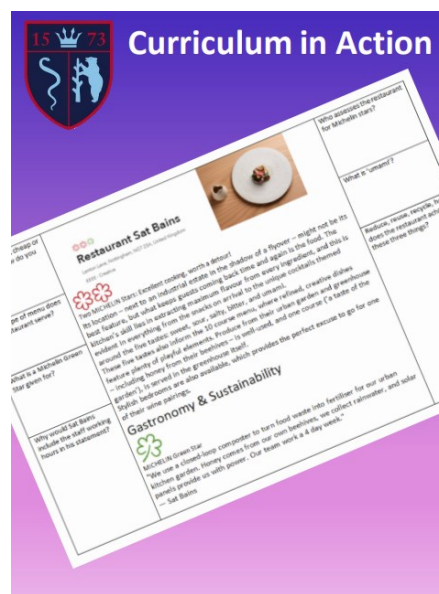
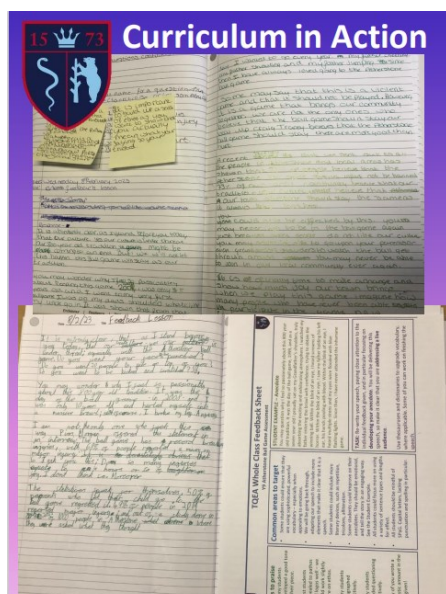
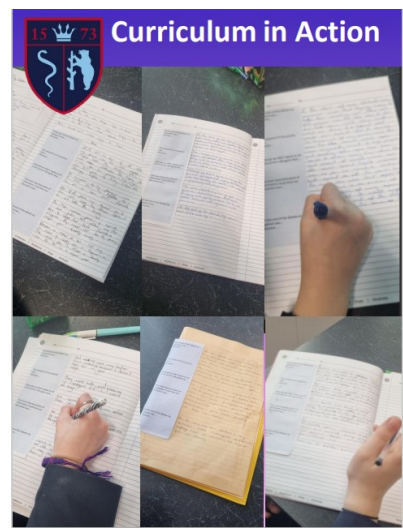
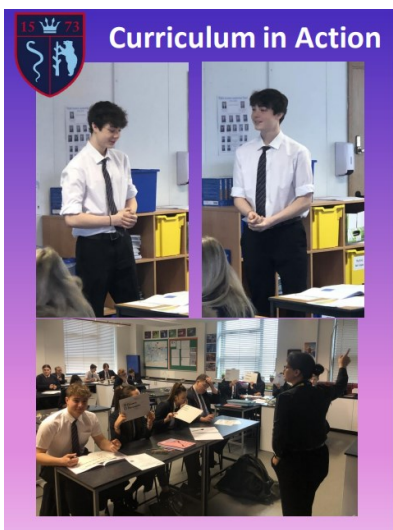
Page One: Top two photos show a very successful speech from a Year 9 in English; the bottom photo shows Y11 students using whiteboards for AFL in a Science lesson.

Page two: Top two photos highlight Year 7s working together to complete an inference activity in English; bottom three photos reveal students in Y10 Sociology working together sharing specific areas of knowledge to teach each other.

Page Three: Demonstration that writing floats on a sea of talk: PSHE students completing extended writing following a debate using discussion mats.

Page Four: Students taking pride and redrafting their extended writing as a result of teacher feedback.

Page Five: A teacher-made guided reading source for Year 10 Hospitality and Catering: developing students' recent knowledge while getting them to think meaningfully about a text and developing their cultural understanding.



Communication Tree



The Queen Elizabeth
Academy
"We Can and We Will"

TQEA Communication Tree – Pastoral

- Concerns about attainments & progress
- Concerns about learning behaviour
- Queries about the course

Subject
Teacher

- Issues not already addressed by subject teacher
- Discipline in lessons

Head of
Department

- Serious safeguarding & wellbeing concerns
- School-wide issues
- Issues that cannot be resolved by Tutor, Teacher, Head of Department or Head of Year.

SLT
Principal
Vice Principal
Assistant Principal

TQEA Communication Tree - Academic

Attendance
related queries

Attendance
Officer

- Minor pastoral concerns
- Uniform issues
- Appointments
- General home learning issues
- General equipment issues

Refer to tutor in
first instance

- Pastoral concerns, e.g. child unhappy, friendship issues
- Academic concerns across a range of subjects
- Child's overall learning behaviour
- Safeguarding & wellbeing
- Specific issues that cannot be dealt with by tutor

Head of Year

LGBT History Month

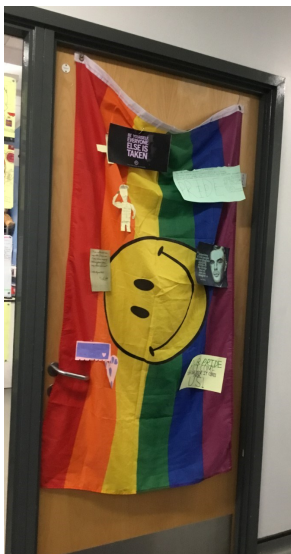
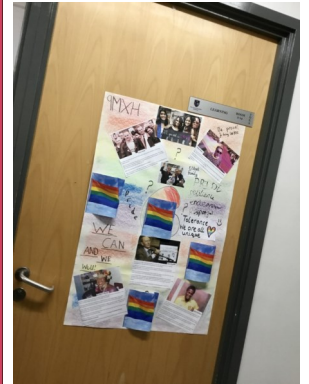
ACTIVITIES TO GET INVOLVED

This month we're launching the 'Design a Door' challenge!

Over the next fortnight, your tutor group will need to work together to decorate your tutor room door with anything you associate with LGBT+ history and celebrations.

There will be a prize given to the tutor group with the most inspirational door on 16th February.

(Remember: This year's theme is Blurring Borders)



February Half Term: Friday 17th February—27th February.

We wish all students and their families a wonderful half term and hope they enjoy their weeks break.

We look forward to welcoming all students back at 8:40 on Monday 27th February.

Advertising this webinar for parents and carers wanting to know more about RISE. [#RISE](#) [#parentpartnership](#)



Parent Carer Webinar
Tuesday 28 February 2023
12 - 1pm

Coventry and
Warwickshire RISE

Warwickshire County Council

WARWICKSHIRE
PARENT CARER VOICE

RISE

The advertisement features a blue background with a pink border. On the left, there is an illustration of a woman standing and a girl in a wheelchair. On the right, there is an illustration of a man standing with his arms crossed. The text is centered and includes the event title, date, time, and location. Logos for Warwickshire County Council, Warwickshire Parent Carer Voice, and RISE are at the bottom.



The Queen Elizabeth Academy

T
Q
E
A



tqea.attrust.org.uk



01827 712477



TQE-Info@attrust.org.uk



TQEA - The Queen Elizabeth Academy



@TQEA_Principal



Witherley Road, Atherstone, Warwickshire, CV9 1LZ