



# 22/23

**The Queen Elizabeth  
Academy**



Weekly—  
**Newsletter**

Issue No — 56/57



**The Queen Elizabeth  
Academy**



THANK YOU SO MUCH to the families who have been working hard to ensure children's punctuality and high attendance so far this year. THANK YOU for getting these important habits established as it will make a big difference in their futures both at collage and once they secure employment. As a school we understand it has been a very difficult and challenging time since Covid-19 but attendance and punctuality are still key. Please continue to send your children to school with minor illnesses, if your child has a mild illness please bring your child to school we will support them throughout the day to learn and be successful, in the rare case that a child becomes ill in school we will call you and we can make a decision together whether or not they are well enough to remain in school. Students should only contact home through reception as using mobile phone breaks our safeguarding policy for all students.

If your child is too sick to be at school for a number of days the absence will be authorised rather than unauthorised. Absences need to be reported to the Attendance Officer. However, failure to report an absence will result in the absence being unauthorised. If your child is regularly missing school we may need to make a home visit and if attendance falls into the persistent absent category of below 90% we are legally required to refer to Warwickshire attendance service and at this point will no longer be able to authorise absence without medical evidence.

As mental health of young people becomes a growing area in terms of need and provision we have invested heavily in this area as a school with a full time in school counsellor, mental health training for staff and work with a growing number of external resources. We support our students with their mental health needs and research and evidence shows that routine and structure is helpful to mental health while avoiding school can lead to increased problems over time.

School attendance is important because the law requires it. As a parent you are legally responsible for making sure your child gets a full-time education. This means registering your child at school and making sure they attend regularly. So far this year we have....

- Referred the parents/carers of 40 pupils to Warwickshire Attendance Service for poor attendance and punctuality
- We have conducted home visits where no contact was made with school
- Sent 150 letters to parents/carers where their child's attendance/punctuality was below 90%

As the world continues to change post Covid and with the current cost of living crisis the education of young people is more important than ever. Globally countries develop and grow where their population has a higher level of education and over time student with higher level education will earn more over their lifetime than those with a lower education. Locally the businesses and employment opportunities have changed hugely in the past decade and will continue to do so. We want all our students to have the best careers, futures and lives and that begins with being at school.

THANK YOU again so much for your support of your child and of the school, we appreciate it.

Mrs. B Gibson  
Assistant Principal

# Attendance Stars

From September to December all students with improved attendance were given a raffle ticket which went into a prize draw. There were 3 prizes per year group , vouchers from Costa, Jump Xtreme , snowdome, Five Guys , Amazon gift cards,.

Congratulations to our winners below.

## Year 7

Alisha Twomlow  
Ava Peyton  
Charlotte Martin

## Year 8

Alexandra Moise  
Jayden Marange  
Sienna Wattis

## Year 9

Frankie Lees  
Lucie Frost  
Cara Hitchens

## Year 10

Evie Benton  
Lois Dawe  
Kieran Crutchley

## Year 11

Thomas Cope  
Scarlet Thompson  
Dancia Smith



# Tutor Group of the Week

We are currently running an incentive for the Tutor Group of the Week. The tutor group with the highest attendance each week get £5 put in a pot and can spend how they choose. This competition is running until Easter half term, after Easter we have an exciting new incentive beginning.

Below is the current tutor group in each year winning.

**7UXA**

**8NMT**

**9SK**

**10JXP**

**11ECT**



**CONGRATULATIONS**

# Attendance Year to Date

Year 7- 93.3%

Year 8 - 91.5%

Year 9 - 88.3%

Year 10 – 85.7%

Year 11- 88.2%



Attendance  
Matters



# Principal Awards



**PRIDE:** Excellent leadership and sportsmanship shown during our YR7&8 girls football tournament



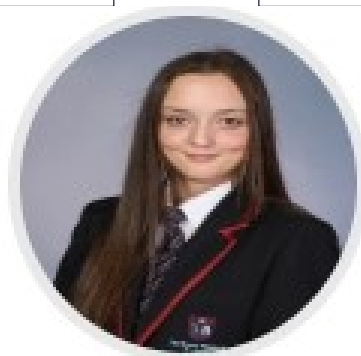
**ENDEAVOUR:** Top 3 performance on SPARX in the last week



**ENDEAVOUR:** Top 3 performances on SPARX in the last week



**PRIDE:** Excellent focus and attitude in English



**RESILIENCE:** Excellent reflective approach to improving her work, showing grit and determination



# Principal Awards



ENDEAVOUR: Top 3 performances on SPARX in the last week.



ENDEAVOUR: Top 3 performance on SPARX in the last week.



ENDEAVOUR: Top 3 performances on SPARX in the last week.



ENDEAVOUR: Excellent endeavour in Maths lessons and curiosity to understand our topic deeply.



PRIDE: Excellent focus and attitude in Science.



# Head of Year

## Special Recognition

Congratulations Year 7/8 or working hard to improve our positive achievement points! Here are the top students from their tutor groups.

Nikita Masakovskis 7CXR 10 points

Felicity Ariyanto 7DK 13 points

Archie Wortley 7KXS 11 points

Tommy Eden 7LD 22 points

Bryn Sweet 7SDS 14 points

Ava Peyton 7UXA 13 points

Erin Duffield 8BXM 7 points

Harlow Cooper 8GXB 11 points

Molly Davey 8NEH 10 points

James Ford 8NMT 17 points

Daniel Smith 8RRC 7 points





# Celebration of Achievement

## Top 3 Tutor Group

27/02-05/03

9SJ 516 points  
11RJG 450 points  
9JRW 354 points

## Top 3 Tutor Group

Year to Date

7LD 9511 points  
10RZC 8928 points  
7DK 8263 points

## Top Year 7 Students

27/02-05/03

Tommy Eden 7LD 22 points  
James Edwards 7LD 19 points  
Bryn Sweet 7SDS 14 points  
Felicity Ariyanto 7DK 13 points

## Top Year 8 Students

27/02-05/03

Oliver Turner 8RRC 20 points  
Harry O'Neill 8RRC 18 points  
Andreea Postelnicu 8GXB 18 points  
Noah Miller 8RRC 17 points

## Top Year 9 Students

27/02-05/03

Frankie Lees 9SJ 40 points  
Lucie Frost 9SJ 39 points  
Cara Hitchens 9SJ 39 points  
Faye Read 9SJ 39 points  
Maisie Atkinson 9JRW 37 points

## Top Year 10 Students

27/02-05/03

Trinity Millington-York 10RZC 24 points  
Maisie MArples 10RZC 20 points  
Daniel Matthews 10RZC 20 points  
Owen Russell 10RM 19 points

## Top Year 11 Students

27/02-05/03

Ethan King 11RJG 26 points  
Mia Povey 11RJG 26 points  
Dareon Shipley 11KJW 26 points  
Libby Stanton 11RJG 26 points  
Olivia Wagstaff 11ECT 25 points



**KEEP UP THE GREAT WORK!!**

# Celebration of Achievement

**Top 3 Tutor Group**  
06/03-12/03  
10RZC—377 points  
7DK –313 points  
9SJ 278 points

**Top 3 Tutor Group**  
Year to Date  
7LD 9531points  
10RZC 9283 points  
7DK 8554 points

**Top Year 7 Students**  
06/03-12/03  
Felicity Ariyanto 7DK 23 points  
Ashleigh Roberts 7DK 18 points  
Harry Cope 7DK 17 points  
Harry Cressey 7DK 27 points  
Amber Kaur 7DK 17 points  
Molly Smallwood 7DK 17 points

**Top Year 8 Students**  
06/03-12/03  
James Ford 8NMT 17 points  
Emily Lindner 8NMT 17 points  
Martha Harding-Peel 8NMT 16 points  
Maya Singh 8NMT 15 points  
Isla Smith 8NMT 15 points

**Top Year 9 Students**  
06/03-12/03  
Lucie Frost 9SJ 24 points  
Corey Charteris 9SJ 23 points  
Faye Read 9SJ 22 points  
Reuben Hargreaves 9MXH 21 points

**Top Year 10 Students**  
06/03-12/03  
Sonny Whitehead 10RZC 22 points  
Ruby Wardle 10RZC 21 points  
Maisie Watson 10RZC 19 points  
Grace Caddy 10RZC 18 points  
Jospeh Gibson 10RZC 18 points  
Mia Sammons 10RZC 8 points  
Jude Thorpe 10RZC 18 points

**Top Year 11 Students**  
06/03-12/03  
George Vella 11ECT 10 points  
Isaac Hiatt 11ECT 5 points  
Saffy Brennan 11MRB 4 points  
Riley Dyde 11KJW 4 points



**KEEP UP THE GREAT WORK!!**

# Curriculum in Action #23

Page One: Examples of students improving their learning through their detailed written responses, following whole class feedback

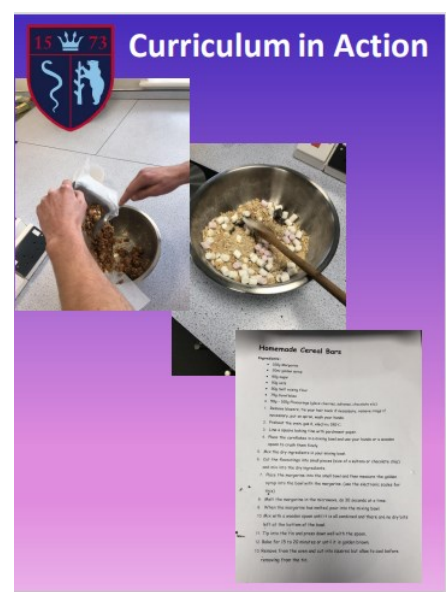
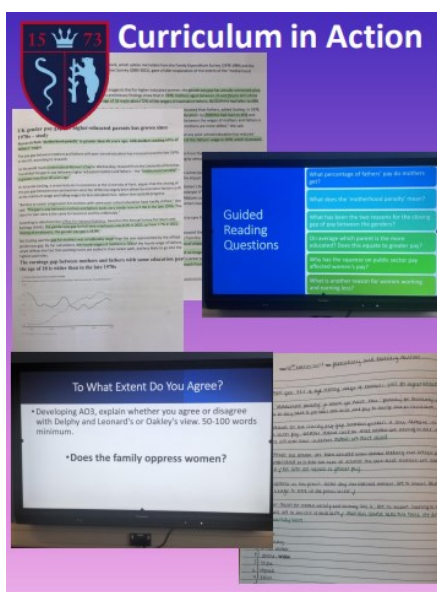
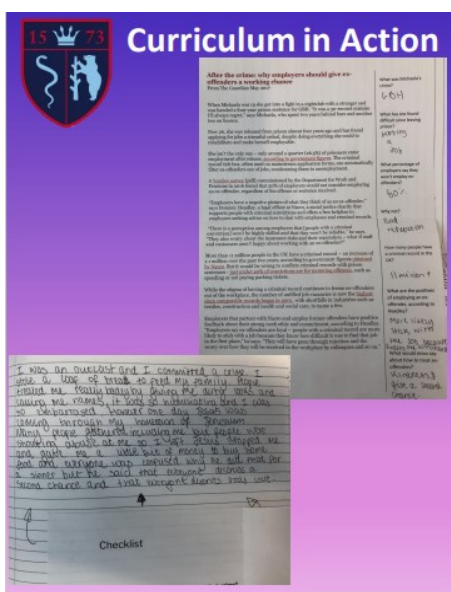
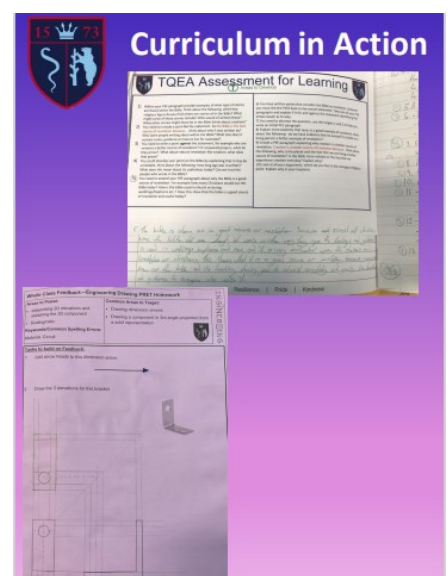
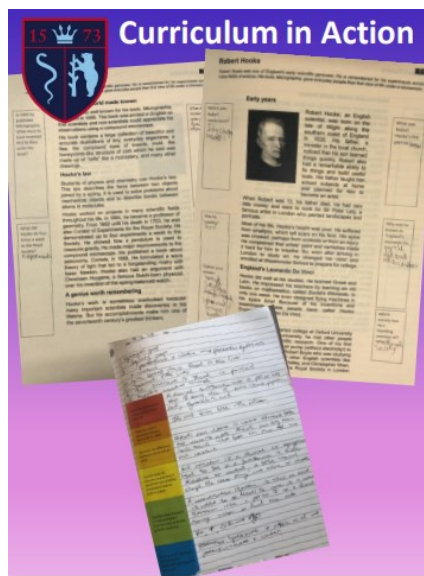
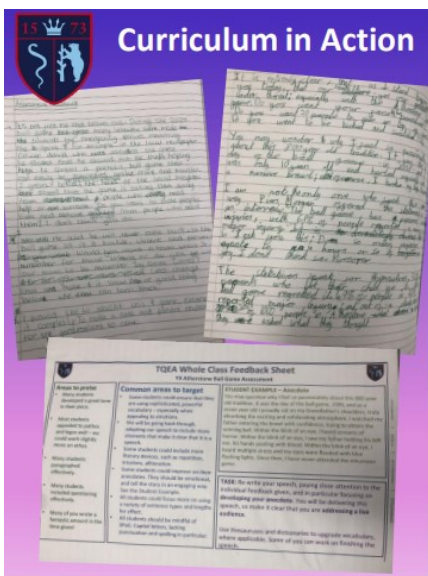
Page Two: WCFS in RE and in Engineering

Page Three: Guided reading in Science and a structure strip

Page Four: Guided reading in RE leading to extended writing

Page Five: A lesson built around a well-chosen text: highlighting key words as it is read; guided reading questions; discussion; and extended writing.

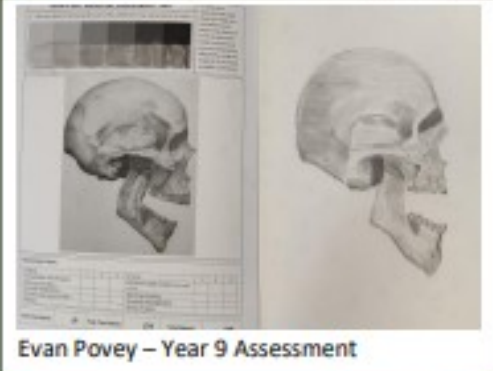
Page Six: Students having to read the recipe in Food for their practical (and then re-reading because they forgot to add their dry ingredients).



# What's Happening in Art?

## Curriculum News

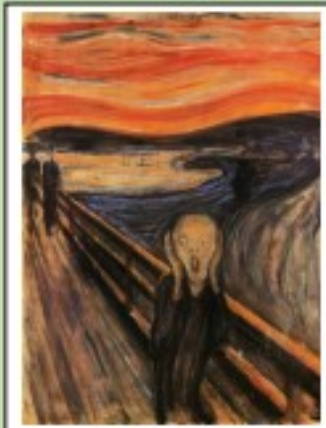
YEAR	What have we been learning?	Key Vocabulary
7	Year 7 are currently learning about Romanticism and have been exploring how to create implied texture.	Implied Texture Shading Tone
8	Year 8 are studying Dada art and have been discussing how art can be created from ready made items.	Bourgeois Debate
9	Year 9 are learning about Aboriginal art and have been creating art to represent traditional dreamtime stories. They have also undertaken their 2 <sup>nd</sup> art skills assessment.	Dreaming Dreamtime Symbols Belief
10	Year 10 are undertaking contextual analysis and have been looking at working in the style of several artists. This week Year 10 have looked closely at the work of Ian Murphy and trying to replicate his surface texture.	Analysis Surface Media Texture
11	Year 11 are currently undertaking the Externally Set Assignment unit. This Week they will be issued with guidance on how to develop their unit 1: Personal portfolio and will be expected to develop this work as homework independently.	Contextual Analysis Media Exploration Recording Outcome



Which of these famous pieces of art do you prefer and why?



Johannes Vermeer  
Girl with a Pearl Earring



Edvard Munch  
The Scream

Come and find Mrs Bennett to tell her your opinion!

W O R D  
G U E S S S

Can you unscramble the letters to make a word relating to art?

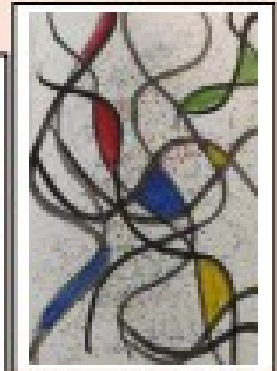
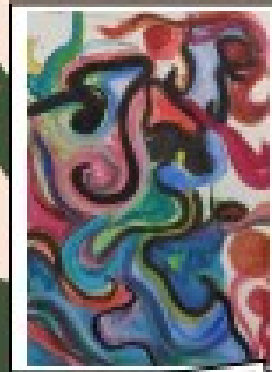
t u c r S p e u l

**Dictionary Definition:** *noun*  
The art of making three-dimensional representative or abstract forms, especially by carving stone or wood or by casting metal or plaster.

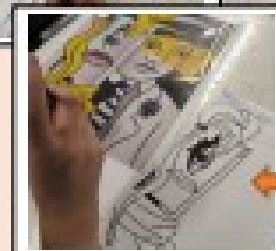
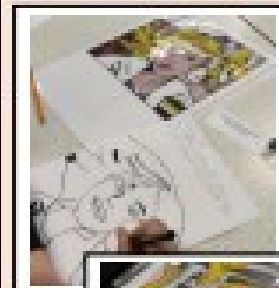
Answer to follow

# What's Happening in Art?

Curriculum News		
YEAR	What have we been learning?	Key Vocabulary
7	Year 7 are currently learning about Romanticism and this week they have been learning all about colour and colour theory.	Primary Secondary Harmonising Complementary
8	Year 8 are studying Dada art and have been developing work automatic drawings in the style of Joan Miro	Automatic Abstract Colour Mark-Making
9	Year 9 are learning about Aboriginal art and have started to create the structure for their 3D boomerang out of cardboard and masking tape.	3-Dimensional Structure Craft
10	Year 10 are continuing to develop their contextual analysis and have been working towards the completion of their Ian Murphy Artist Research page.	Analysis Surface Media Texture
11	Year 11 are currently undertaking the Externally Set Assignment unit. This Week they have been developing their design ideas ready for their final outcomes that will be produced during their 10 hour practical exam after Easter.	Contextual Analysis Media Exploration Recording Outcome



Year 8 examples of Automatic Drawings in the style of Joan Miro



Examples of students working in the style of Lichtenstein for World Book Day



**Get Talking...**

What do you think is happening in this art work?



Johann Heinrich Fuseli – The Nightmare

Come and find Mrs Bennett to tell her your opinion!

W	O	R	D	
G	U	E	S	S

Can you unscramble the letters to make a word relating to art?

h B s o u r w r k

Dictionary Definition:

The manner in which an artist applies paint with a brush.

Answer from last week: Sculpture

Great to see the inaugural chess club meeting taking place on Wednesday. 8th March Inspired by #DOFE students. Excellent concentration, thinking and fun. #chess #curriculum #curriculum2023



Fantastic performances by our year 7 & 8 girls' football teams. Awesome ambassadors for TQEA. #football #tournament #pride

Lovely breakfast flapjacks with slow release oats and mini-eggs being made by year 10 on Wednesday 8th March Wonderful! #flapjacks #Easter2023 #food



High levels of concentration and strategic mastery in chess club on Wednesday.  
 #Curriculum23 #chess  
 #strategy



Great turn out of parents, carers and students at our Options Evening. It was great to talk with you all about the ambitions of your children and their pathways moving forwards.

Final support for Year 11 with our "10 weeks left" assembly on Wednesday 15th March. Our Easter intervention booster programme will be released to parents. Carers and students shortly. We are backing cohort 23 all the way! #GCSEs2023 #OurYear #WeCanAndWeWill

**1** What CAN you control?

- ✓ What revision you do
- ✓ How you switch off
- ✓ Making sure you have exercise in your life
- ✓ Getting the balance right
- ✓ Recognising the signs of stress or fatigue



**2** **THE LEARNING PYRAMID**  
KNOWLEDGE RETENTION RATES

Adapted from National Training Laboratories, 1964

**3**  **I can't do it**

The point is that **YOU** control your own choices and **YOU** are the one who can change you.

No one else can.

**4** **The next 10 weeks...**  
 are all about **YOU!**

- ✓ having great training runs
- ✓ going through the routines you are already using
- ✓ keeping focused
- ✓ looking after yourself



# Communication Tree



The Queen Elizabeth  
Academy  
"We Can and We Will"

## TQEA Communication Tree – Pastoral

- Concerns about attainments & progress
- Concerns about learning behaviour
- Queries about the course

Subject  
Teacher

- Issues not already addressed by subject teacher
- Discipline in lessons

Head of  
Department

- Serious safeguarding & wellbeing concerns
- School-wide issues
- Issues that cannot be resolved by Tutor, Teacher, Head of Department or Head of Year.

SLT  
Principal  
Vice Principal  
Assistant Principal

## TQEA Communication Tree - Academic

Attendance  
related queries

Attendance  
Officer

- Minor pastoral concerns
- Uniform issues
- Appointments
- General home learning issues
- General equipment issues

Refer to tutor in  
first instance

- Pastoral concerns, e.g. child unhappy, friendship issues
- Academic concerns across a range of subjects
- Child's overall learning behaviour
- Safeguarding & wellbeing
- Specific issues that cannot be dealt with by tutor

Head of Year



# Understanding Your Teenager

A FREE 2-hour workshop for parents and carers

At Atherstone Children and Family Centre

On Friday, the 31st March 2023, 9:30-11:30

The teenage years can be challenging both for parents and teenagers themselves! But teenager's behaviour does not have to be a mystery.

The aim of Understanding Your Teenager 2-hour workshop is to enhance parent/carers relationships with their teenagers building on parent/carers understanding of teenage development and behaviours. Topics covered during the session include: what to expect during this phase, understanding your teen, communicating with and empowering teenagers.



Limited places. Please book on Eventbrite using QR code below or email [ehparenttrainers@warwickshire.gov.uk](mailto:ehparenttrainers@warwickshire.gov.uk) for more information





# Easter Holiday Sports Clubs

FREE FRUIT

# #SMASH23 AGES 5-13

## SUPER MULTI ACTIVITY SPORT HOLIDAYS!

**£15**  
Per Day  
(without HAF code)

9.30AM TO 3.30PM

3rd-6th April & 11th-14th April

Free Holiday Club\*

**HAF**

- FOOTBALL
- ATHLETICS
- HOCKEY
- CRICKET
- GOLF
- RUGBY
- TENNIS
- NETBALL
- ROUNDERS
- BASKETBALL
- AND MUCH MORE...




\*Children must have a valid HAF code issued to them by Warwickshire County Council to access the activities free of charge

FULLY QUALIFIED DBS CHECKED COACHES

The Pingles Stadium, Avenue Road, Nuneaton, CV11 4LX

For further information and booking details please contact Rory on 07471 896070 or email [coach@nwschoolsport.org.uk](mailto:coach@nwschoolsport.org.uk)  
BOOK ONLINE NOW AT [WWW.THEPINGLESSTADIUM.COM](http://WWW.THEPINGLESSTADIUM.COM)

  Find us on Facebook & Twitter

The Pingles Stadium

# Information

## Parents Support Evening

An evening of information and support for parents and families, local support agencies will be at Arley Community Centre on Friday 17th March from 5-7pm to answer questions and provide information about issues affecting and important to young people.

Agencies include: MIND, Rise, Warwickshire County Council Early Help, Compass, Nuneaton and North Warwickshire Equestrian Centre, Citizens Advice, Warwickshire Police, Family Information Service, Atherstone Hub, Warwickshire CAVA volunteering, Aspergers Utd.

Free hot meal and drink provided by Norma Jeans Roadside Diner  
Activities in the lounge for young children.

# Dates for the Diary

Thursday 30th March: Year 11 Progress Evening

Monday 3rd April—Friday 14th April Easter Half Term

Monday 2nd May—May Bank Holiday



# The Queen Elizabeth Academy

T  
Q  
E  
A



[tqea.attrust.org.uk](http://tqea.attrust.org.uk)



01827 712477



[TQE-Info@attrust.org.uk](mailto:TQE-Info@attrust.org.uk)



TQEA - The Queen Elizabeth Academy



@TQEA\_Principal



Witherley Road, Atherstone, Warwickshire, CV9 1LZ