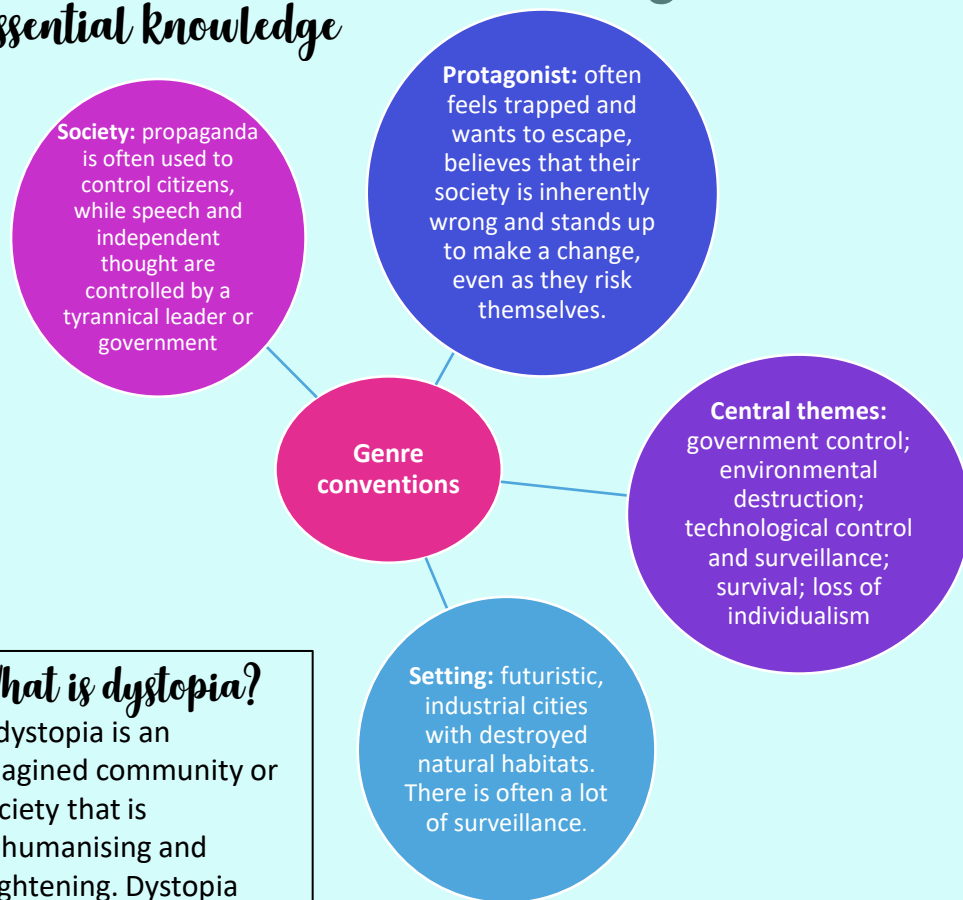




Year 8 English - Social Inequality & Injustice



Essential knowledge



What is dystopia?

A dystopia is an imagined community or society that is dehumanising and frightening. Dystopia comes from the Greek 'dys' ('bad') and 'topia' ('place'). If 'utopia' represents an ideal society, 'dystopia' is an imagined nightmare world which is usually the world of the future.



Key Terms	Definition
irony	When the opposite of what's expected happens—often used to show how twisted the society is. Example: Calling a brutal police force 'Peacekeepers'.
juxtaposition	Placing two contrasting ideas side by side—for example, a perfect image of order next to cruelty.
semantic field	A collection of words that can be grouped by meaning. A strong semantic field can enhance atmosphere/mood.
symbolism	When something stands for something else—often used to represent control, freedom, or rebellion.

Sophisticated vocab	Definition
censorship (n.)	Suppression of speech, communication and public information.
conform (v.)	To match your behaviour/attitudes to the wider group.
dehumanising (v.)	To deprive a person of basic human rights or qualities.
ideology (n.)	A set of beliefs, often used to control or justify actions.
totalitarian (adj.)	A system of government that is centralised and dictatorial.
tyrannical (adj.)	Cruel, unreasonable leadership.
oppressive (adj.)	Unjustly inflicting hardship and constraint.
propaganda (n.)	Using biased/misleading information to promote a cause.
rebellion (n.)	A refusal to obey authority; resistance.

Essay Writing Focus - Fully Embedding Quotations

What does this mean? In Year 7, we have practiced the basics of including quotations and embedding them in your How 1 sentence so there is flow. However, you can save time and make your point clearer by breaking up a quotation or combining two quotations in one sentence.

What does this look like? *The protagonist Wade describes that his trailer was on the 'edge of the stacks' leading to a 'crumbling highway' and that the skyline is 'grim'. The writer therefore implies that the setting is dystopian because...*

Writing structure & sentence starters

What — what impression does the writer create?

- [Writer's name] *has created the impression that...*

How 1 — How do you know this?

- *This is clear when the writer states...* [quotation]

How 2 — How can you explore this quotation?

- *This suggests...* [explain what the quotation means/implies]
- *The use of the [word/ word class/ technique] conveys that...*

Why — Why does the writer give us this impression?

- [Writer's name] *has presented [the topic] in this way in order to...*